



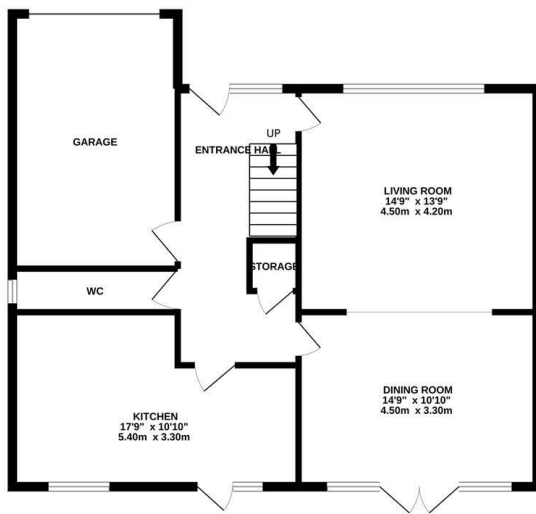
## Woodsgate Park, Bexhill-On-Sea TN39 4DL

Offers in excess of £575,000

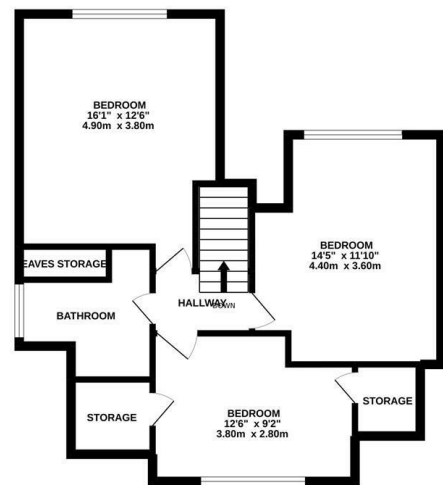


Well presented, three bedroom DETACHED CHALET-STYLE BUNGALOW with an INTEGRAL GARAGE and large, PARK LIKE REAR GARDENS set in a sought after BEXHILL LOCATION. It's ideally positioned close to Bexhill Downs, local shops and transport links. The accommodation here enjoys a versatile layout with a bright OPEN PLAN LIVING SPACE which enjoys a front aspect while the dining area sits at the rear of the property with double doors leading out to an AREA OF PATIO making this the perfect space to DINE AL-FRESCO. On this level there is also a modern FITTED KITCHEN with access to the garden, a downstairs cloakroom and access to the integral garage. On the first floor there are THREE BEDROOMS, two of which are generous doubles, along with a family bathroom. The ESTABLISHED REAR GARDEN is a particular feature here, it's mainly laid to lawn and bordered with mature plants with an area of patio and plenty of outside storage including a handy OUTDOOR STUDIO and potting shed. Enjoying a large GATED DRIVEWAY with OFF ROAD PARKING for multiple vehicles and an integral garage this fantastic property would make

GROUND FLOOR  
855 sq.ft. (79.5 sq.m.) approx.



1ST FLOOR  
586 sq.ft. (54.4 sq.m.) approx.



TOTAL FLOOR AREA: 1441 sq.ft. (133.9 sq.m.) approx.

Whilst every attempt has been made to ensure the accuracy of the floorplan contained here, measurements of doors, windows, rooms and any other items are approximate and no responsibility is taken for any error, omission or mis-statement. This plan is for illustrative purposes only and should be used as such by any prospective purchaser. The services, systems and appliances shown have not been tested and no guarantee as to their operability or efficiency can be given.  
Made with Metropix ©2022

